



Upper Beeding Primary School

School Road, Upper Beeding, BN44 3HY.

Tel: 01903 812288

Fax: 01903 816401

Email: office@upperbeeding.w-sussex.sch.uk

Website: <https://upper-beeding.eschools.co.uk/web>

Head Teacher: Mrs R Linford

Summer 6 – Thursday 23rd June 2016

Dear Parents/Carers



School Council – Cancer Research ‘Race for Life’ Challenge - Wednesday 22nd June

The School Council and Mr Hughes did a superb job of organising our “Pink Mile”, despite the wet weather. All the children and some of our staff completed their “Pink Mile” and had a great time! They were all given a medal, which they have hopefully brought home. The children raised a fantastic amount - **over £890**. Thank you all for supporting this event and sponsoring the children.

Art and Sport Focus Week – 27th June to 1st July

Next week we will be celebrating Art and Sport! We have an artist joining us in school Wednesday to Friday, who will be working with each class and hopefully helping children to create some outside 3D Art! The year group teams have also created a week of art and sports events that children will take part in. It would be useful for children to have their PE kits and suitable footwear in school every day. Please see attached letter.



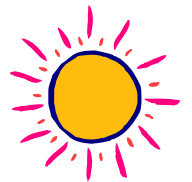
Sports Day – Thursday 30th June

We are keeping our fingers crossed that the weather is fine and are looking forward to our Sports Day. Parents are invited from 10:45am for the Reception and KS1 Sports Day and 1:15pm for KS2 Sports afternoon. You are all welcome to bring a picnic to have with your children and friends over lunch between 12:00 – 1:00pm. This is always a lovely day and a pleasure to see so many families – we look forward to seeing you there.

Summer Fete – Saturday 25th June

Only two more days until the School Summer Fete! Hopefully you have seen the display boards around the village. The children in school and their various musical and sporting groups will be performing throughout the day! The work that has gone into putting this on has been amazing and FUBS have worked tirelessly to ensure the whole day is packed with events, stalls, shows and activities for all the family, promising to be even bigger and better than before!

Thank you all in advance for your support of this fantastic event and I look forward to seeing you on Saturday. To support the Fete we are having the following:-



Non-Uniform Day - Friday 24th June Children can come in their own clothes in return for:-

Reception classes - donations of sweets to sell on the tuck shop stall.

KS1 - homemade cakes for the cake stall.

KS2 - donations of teddies/soft toys or adult tombola prizes.

School Uniform

A number of children are beginning to wear inappropriate footwear and uniform to school. Please can I remind you that school shoes or sandals should be black, navy or brown. We have noticed a number of children wearing different coloured sweatshirts or hoodies around school and request that these are navy. If children are wearing shorts, these should be tailored - thank you for your support with this.



Chartwells – Year 2 Parents

As your child is leaving Year 2 (KS1), unfortunately he/she will no longer be eligible for Universal Infant Free School Meals. If you are not entitled to Free School Meals, meals will need to be ordered via the mealselector website for September 2016. Please log on to www.mealselector.co.uk and create an account (if you don't already have one) by Sunday 21st August 2016. If you have any queries concerning school meals, please contact the School Office – thank you.

KS2 Production – “Shakespeare Rocks” Monday 11th and Tuesday 12th July at 6:00pm

The Children, Mrs Wellby and staff in year 5/6 are currently busy rehearsing and practising in every spare minute for our end of year production. This promises to be another spectacular show and one not to miss! Tickets will be on sale from Friday 24th June and cost £2.00 per adult. Please put the money in a named envelope, clearly marked with your child's class and KS2 Production and bring to the School Office.



KS2 Disco - Wednesday 20th July

Tickets for the KS2 disco will be on sale for £2.50 from Friday 24th June at the School Office. Please put the correct money in a named envelope and hand in at the School Office.



Lost property

This will be displayed on Sports Day – please look through as we have a growing amount. Please may we remind you make sure that clothes are named.

Reminder – School will be closed for INSET on Monday 4th July

Best wishes
Becky Linford
Head Teacher



Dates for Summer Term 2016

Fri 24th June
Fri 24th June
Fri 24th June
Sat 25th June
Mon 27th June
Wed 29th June
Wed 29th June
Thu 30th June
Fri 1st July
Fri 1st July

Mon 4th July

Tue 5th Jul
Tue 5th Jul

FUBS NON UNIFORM DAY
Swimming USA and Spain class
Spain Class Assembly
FUBS SUMMER FETE
Focus week through ART & SPORT
Yr 5/6 Outdoor Athletics
Yr 1/2/3/4 Face Pack Theatre
SPORTS DAY
Kenya Class Assembly
Swimming USA and Spain class

SCHOOL CLOSED - INSET DAY 5

Yr 1/2 France and Ireland Trip to Pulborough Brooks
Yr 3 Athletics Steyning Primary



Wed 6th Jul
 Wed 6th Jul
 Wed 6th Jul
 Thu 7th Jul
 Thu 7th Jul
 Thu 7th Jul
 Thu 7th Jul
 Fri 8th Jul
 Fri 8th Jul
 Fri 8th Jul
 Fri 8th Jul
 Mon 11th Jul
 Tue 12th Jul
 Tue 12th Jul
 Thu 14th Jul
 Fri 15th Jul
 Fri 15th Jul
 Mon 18th Jul
 Tue 19th Jul
 Wed 20th Jul
 Wed 20th Jul
 Fri 22nd Jul

Y6 Induction Day for Secondary School
 Autumn Born Children visiting Reception
FUBS UNIFORM SALE
 Spring born children visiting Reception
 Yr 1/2 Kenya and Australia Trip to Pulborough Brooks
 Y5 Taster day at SGS
FUBS UNIFORM SALE
 Summer born children visiting Reception
 Japan class Assembly
 LAST Swimming USA and Spain class
FUBS UNIFORM SALE
 6:00pm KS2 Show
 6:00pm KS2 Show
 Reports to Parents
 Yr 5/6 Connect to the Countryside
 Y6 Leavers Swim
 Reception Class Assembly
Welcome Meetings
 Leavers Assembly
 4:00-5:30pm Y6 Leavers Party
 5:30-7:00pm KS2 Disco
 Last Day of Term normal finish time



Dates for Autumn Term 2016

Mon 5th Sep
 Tues 6th Sep
 Wed 7th Sep
 Thu 8th Sept
 Mon 12th Sep
 Wed 14th Sep
 Mon 19th Sep
 Wed 21st Sep
 Mon 26th Sep
 Tues 4th Oct
 Mon 10th Oct
 Fri 14th Oct
 Mon 24th Oct
 Fri 28th Oct

SCHOOL CLOSED - INSET DAY 1
SCHOOL CLOSED - INSET DAY 2
 First Day Back – AUTUMN TERM
 1:15pm Bikeability pre talk to Yr 6
 Autumn Born Children start 8:55 – 12:00
 Spring Born children start 8:55 – 12:00
 Summer Born children start 8:55 – 12:00
 All children in Full Time
 Start of Bikeability Week Yr 6
FUBS Bags2School
 Yr 5/6 Start Residential Trip
 Yr 5/6 Finish Residential Trip
 First Day of Half Term
 Last Day of Half Term

Academic Year 2015 to 2016 ☆Includes bank holidays



Term	Dates
Spring term 2016:	Monday 4 January 2016 to Thursday 24 March 2016
Half term break:	Monday 15 February 2016 to Friday 19 February 2016
Easter break☆:	Friday 25 March 2016 to Friday 8 April 2016
Summer term 2016:	Monday 11 April 2016 to Friday 22 July 2016
Half term break:	Monday 30 May 2016 to Friday 3 June 2016

Academic Year 2016 to 2017

Term	Dates
Autumn Term	Starts: Monday 5 September Half term: Monday 24 October to Friday 28 October Ends: Friday 16 December INSET Days: Monday 5 and Tuesday 6 September
Christmas Break	Friday 19 December to Friday 30 December
Spring Term ☆	Starts: Tuesday 3 January Half term: Monday 20 February to Friday 24 February Ends: Friday 7 April Bank Holiday: Monday 2 January, Friday 14 April, and Monday 17 April INSET Days: Tuesday 3 January
Easter Break	Monday 10 to Friday 21 April
Summer Term ☆	Starts: Monday 24 April Half term: Tuesday 30 May to Friday 2 June Ends: Tuesday 25 July Bank Holiday: Monday 1 May and Monday 29 May INSET Days: Monday 5 June, Friday 7 July

☆Includes [bank holidays](#)

